

Bapuji Educational Association (R)
A.R.G. COLLEGE OF ARTS AND COMMERCE
& POST GRADUATE CENTRE

P.J. Extension, DAVANGERE-577 004. Karnataka-India

E-mail: bead_argcdcg@yahoo.co.uk

Web: www.beaargcdvg.org

Affiliated to Davangere University

Accredited by NAAC with B+ (CGPA 2.63)

Recognised by UGC under 2f & 12b

The institution during the academic year 2018-19 conducted a **Student Satisfactory Survey (SSS)** regarding Teaching-Learning and evaluation for upgrading the quality in the institution. For this purpose, 90 students from both UG and PG programme were selected at random. The analysis of the survey is shown below.

Table No.1 Table showing students opinion regarding completion of syllabus

Completion of syllabus	No of students	Percentage
85-100%	50	55.55
70-84%	16	17.78
55-69%	12	13.33
30-54%	7	7.78
Below 30%	5	5.56
Total	90	100

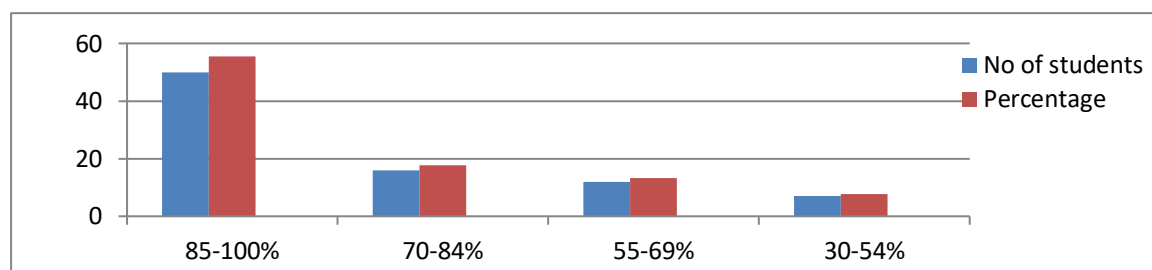


Table No.2 Table showing students opinion regarding teachers' preparation for class

Opinion	No of students	Percentage
Thoroughly	61	67.78
Satisfactorily	19	21.11
Poorly	6	6.67
Indifferently	3	3.33
Won't reach to all	1	1.11
Total	90	100

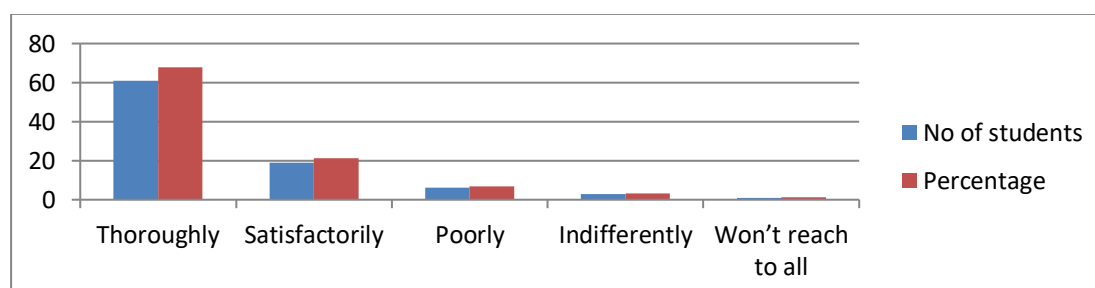


Table No.3 Table showing students opinion regarding teachers' communication

Opinion	No of students	Percentage
Always effective	59	65.56
Sometimes effective	20	22.22
Just satisfactorily	10	11.11
Generally ineffective	1	1.11
Very poor communication	0	0.00
Total	90	100

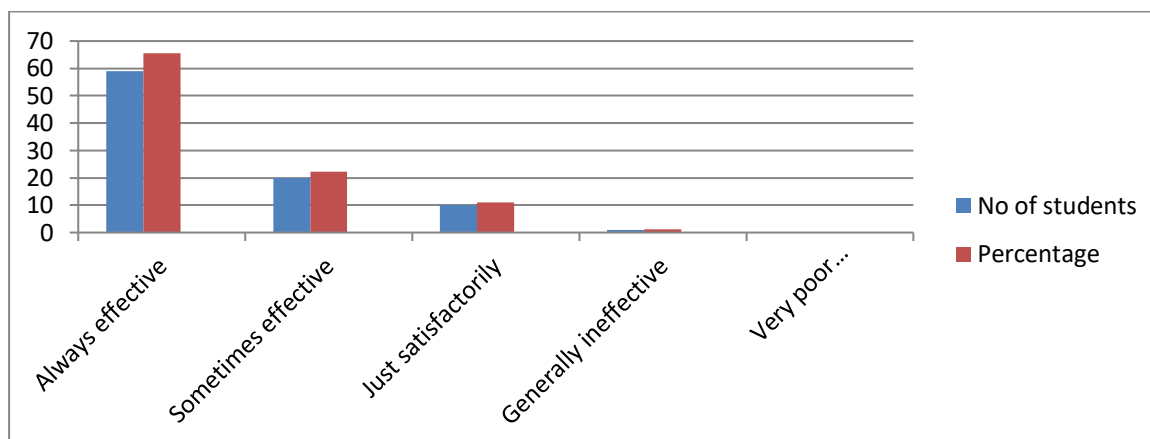


Table No.4 Table showing students opinion regarding teachers' approach to teaching

Opinion	No of students	Percentage
Excellent	60	66.67
Very good	20	22.22
Good	7	7.78
Fair	3	3.33
Poor	0	0.00
Total	90	100

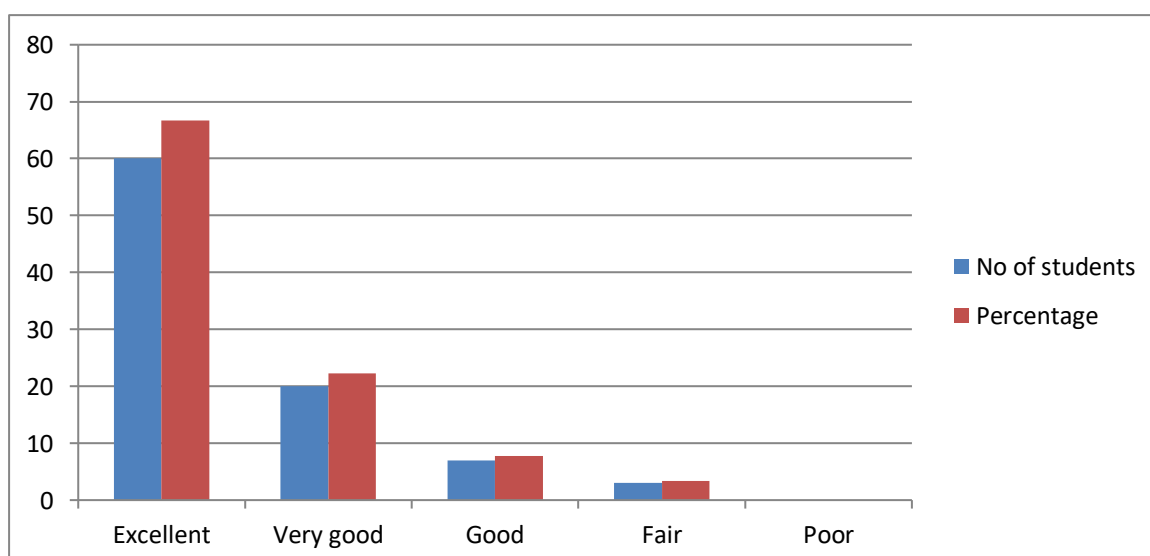


Table No.5 Table showing students opinion regarding fairness of internal evaluation process

Opinion	No of students	Percentage
Always fair	62	68.89
Usually fair	18	20.00
Sometimes unfair	9	10.00
Usually unfair	1	1.11
Unfair	0	0.00
Total	90	100

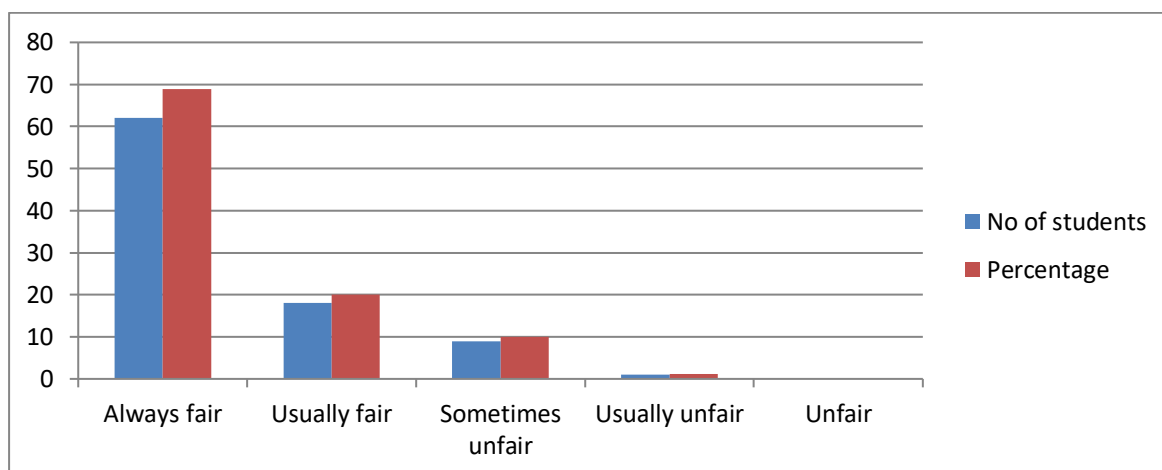


Table No.6 Table showing students opinion regarding their performance in assignment

Opinion	No of students	Percentage
Every time	60	66.67
Usually	15	16.67
Occasionally/sometimes	10	11.11
Rarely	3	3.33
Never	2	2.22
Total	90	100

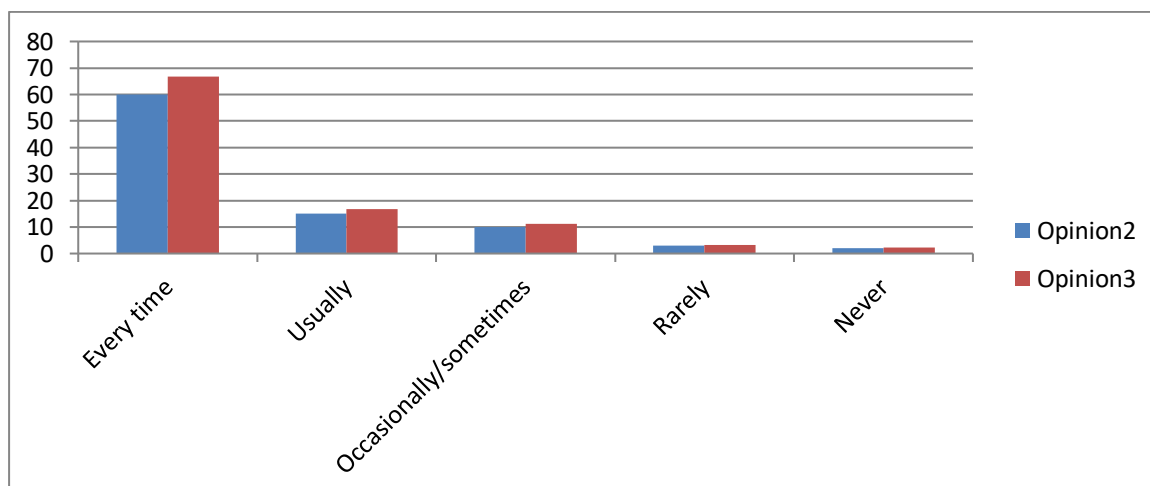


Table No.7 Table showing students opinion regarding teaching and mentoring process

Opinion	No of students	Percentage
Significantly	51	56.67
Very well	19	21.11
Moderately	11	12.22
Marginally	9	10.00
Not at all	0	0.00
Total	90	100

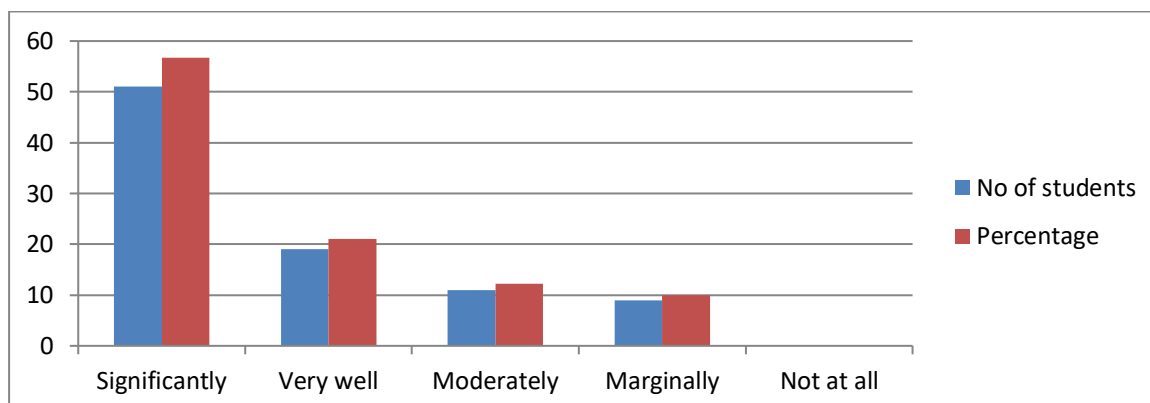


Table No.8 Table showing students opinion on overall growth opportunities provided by the institution

Opinion	No of students	Percentage
Strongly agree	48	53.34
Agree	21	23.33
Neutral	19	21.11
Disagree	2	2.22
Strongly disagree	0	0.00
Total	90	100

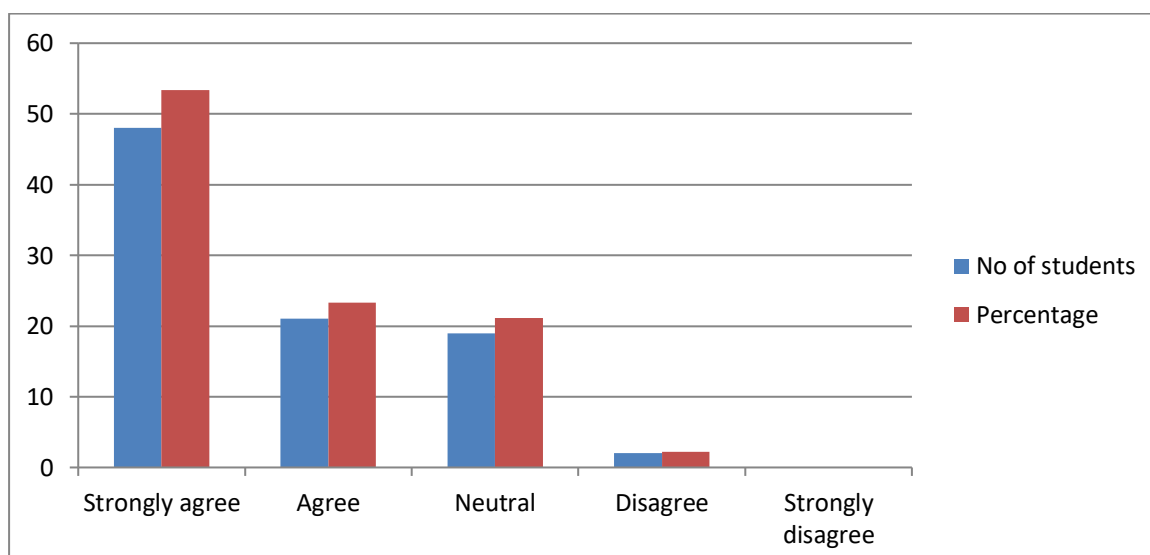


Table No.9 Table showing students opinion regarding teachers' information on Programme and course outcome

Opinion	No of students	Percentage
Every time	44	48.89
Usually	35	38.89
Occasionally/sometimes	9	10.00
Rarely	2	2.22
Never	0	0.00
Total	90	100

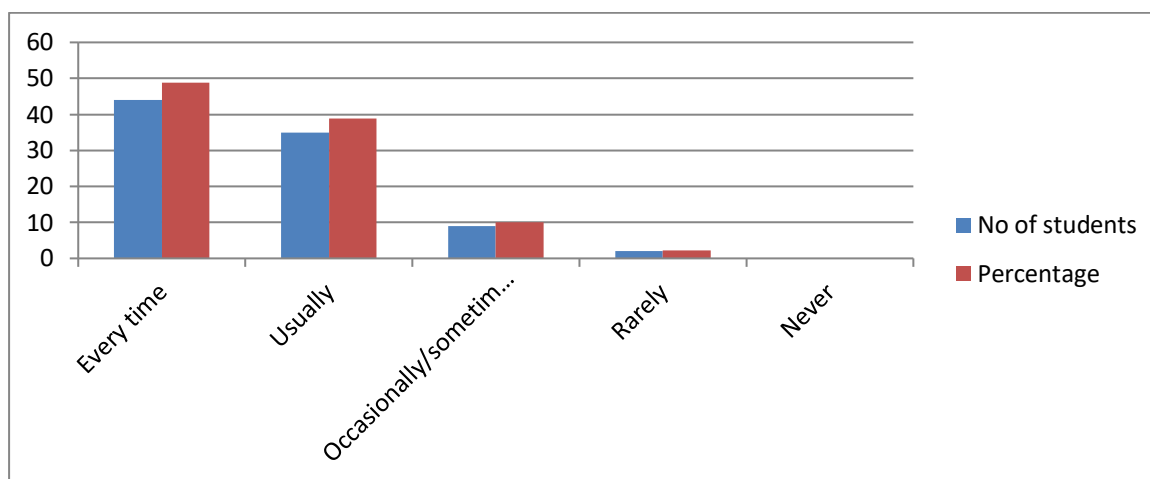


Table No.10 Table showing students opinion on mentor's follow-up

Opinion	No of students	Percentage
Every time	55	61.11
Usually	23	25.55
Occasionally/sometimes	10	11.11
Rarely	2	2.22
I don't have a mentor	0	0.00
Total	90	100

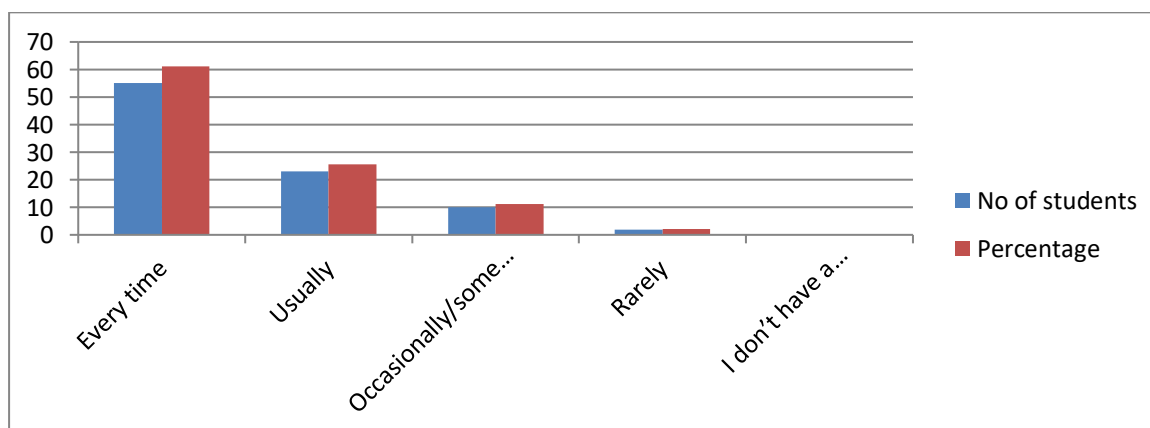


Table No.11 Table showing students opinion regarding teachers' illustrating the concept

Opinion	No of students	Percentage
Every time	48	53.33
Usually	26	28.89
Occasionally/sometimes	12	13.33
Rarely	4	4.45
Never	0	0.00
Total	90	100

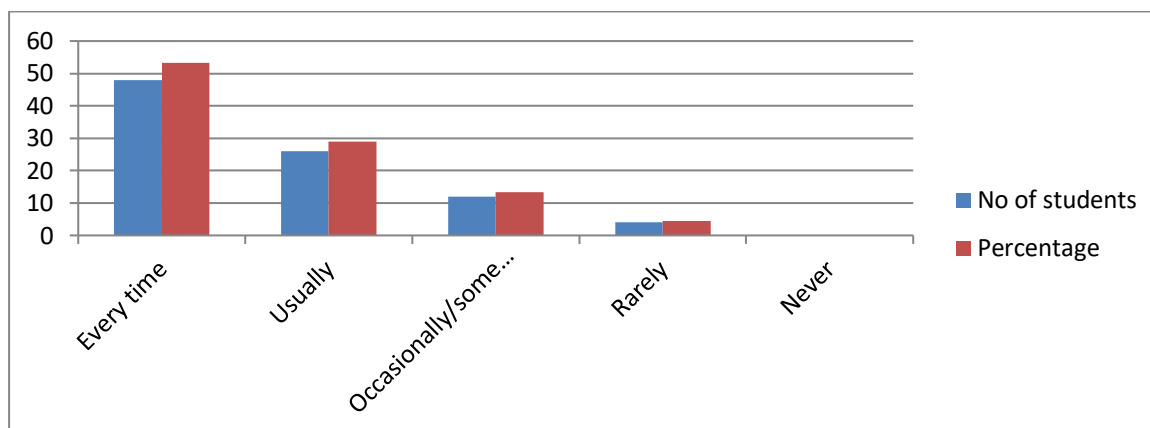


Table No.12 Table showing students opinion regarding teachers' identifying student strength and upliftment

Opinion	No of students	Percentage
Fully	49	54.45
Reasonably	22	24.44
Partially	14	15.55
Slightly	5	5.56
Unable to	0	0.00
Total	90	100

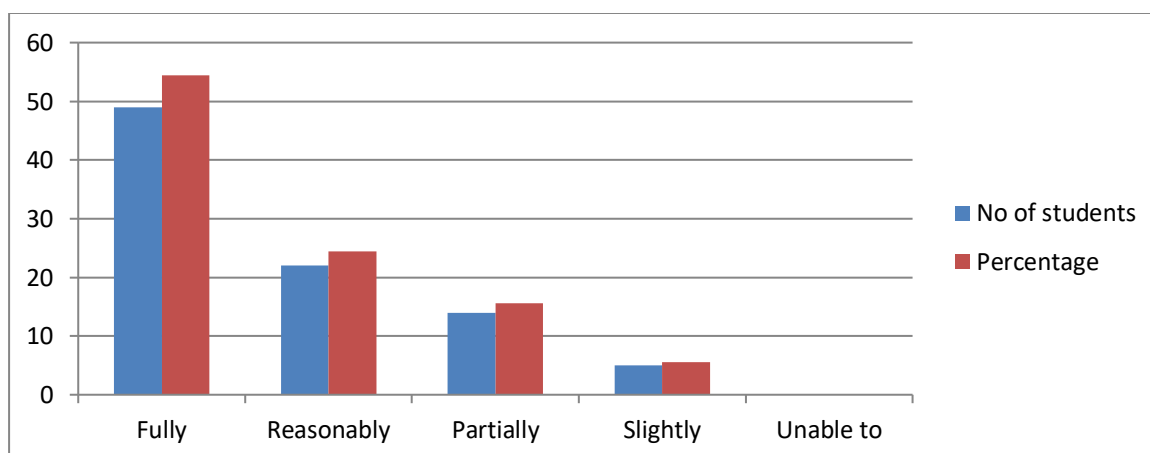


Table No.13 Table showing students opinion regarding teachers' identifying student weaknesses & overcome them

Opinion	No of students	Percentage
Every time	49	54.44
Usually	22	24.44
Occasionally/sometimes	14	15.56
Rarely	5	5.56
Never	0	0.00
Total	90	100

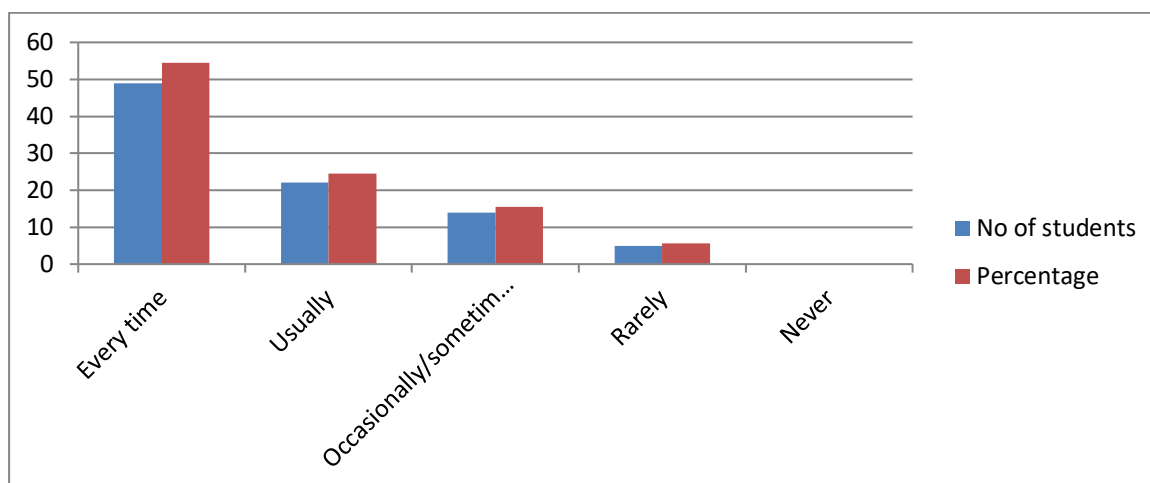


Table No.14 Table showing students opinion regarding institution effort in monitoring quality of teaching

Opinion	No of students	Percentage
Strongly agree	45	50.00
Agree	30	33.33
Neutral	14	15.56
Disagree	1	1.11
Strongly disagree	0	0.00
Total	90	100

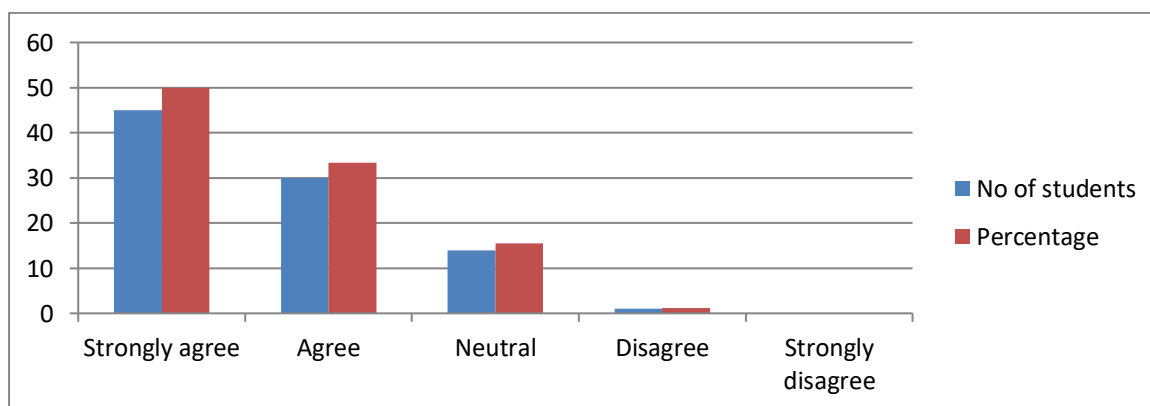


Table No.15 Table showing students opinion regarding teacher's use student centric methods such as experimental learning, participative learning and problem solving

Opinion	No of students	Percentage
To a great extent	63	70.00
Moderate	23	25.56
Some what	4	4.44
Very little	0	0.00
Not at all	0	0.00
Total	90	100

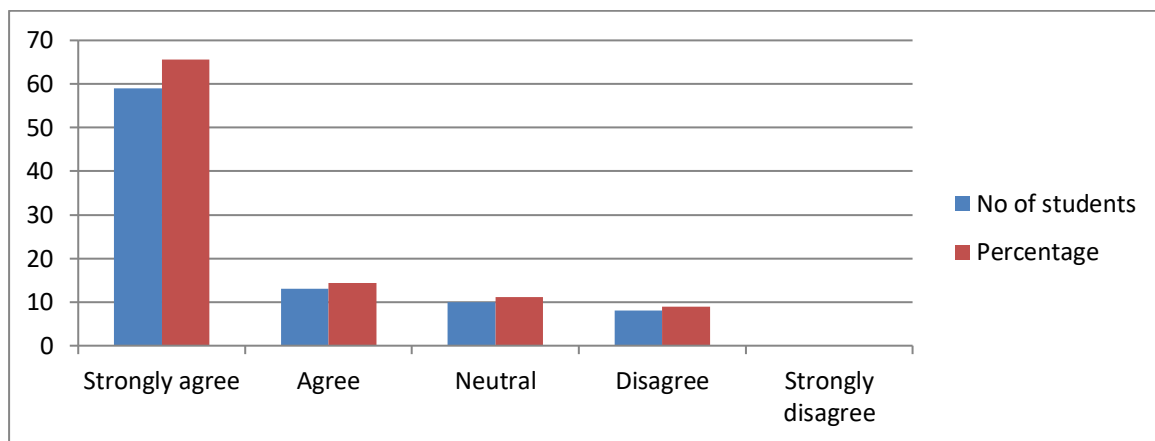


Table No.16 Table showing students opinion regarding teacher's encouragement to students to participate in extracurricular activities

Opinion	No of students	Percentage
Strongly agree	59	65.56
Agree	13	14.44
Neutral	10	11.11
Disagree	8	8.89
Strongly disagree	0	0.00
Total	90	100

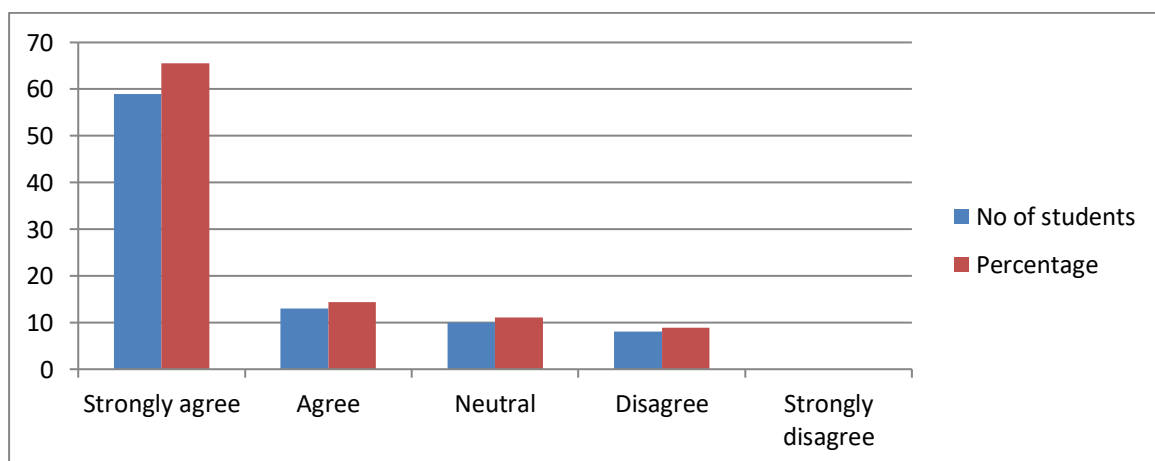


Table No.17 Table showing students opinion regarding teacher's efforts to inculcate soft skills and employability skills

Opinion	No of students	Percentage
To a great extent	46	51.11
Moderate	26	28.89
Some what	15	16.67
Very little	3	3.33
Not at all	0	0.00
Total	90	100

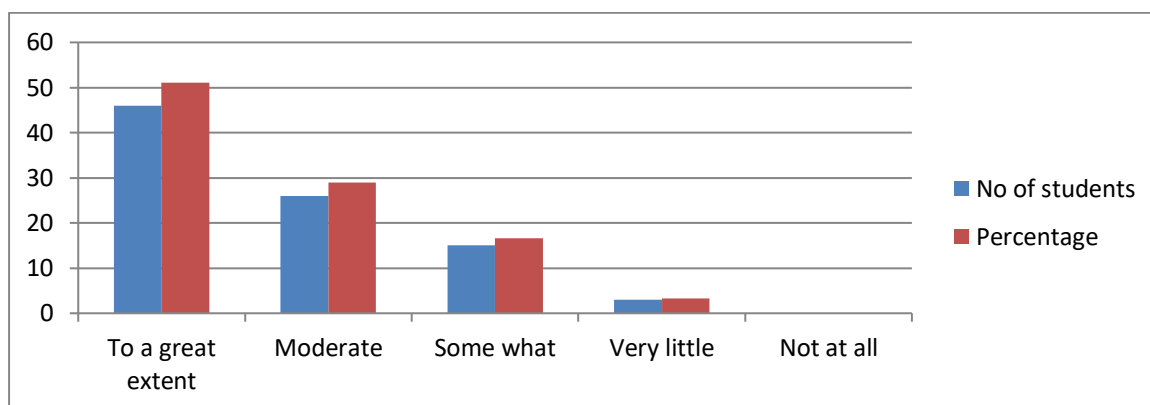


Table No.18 Table showing students opinion regarding percentage of teachers using ITC

Opinion	No of students	Percentage
Above 90%	26	28.89
70-89%	48	53.33
50-69%	10	11.11
30-49%	5	5.56
Below 29%	1	1.11
Total	90	100

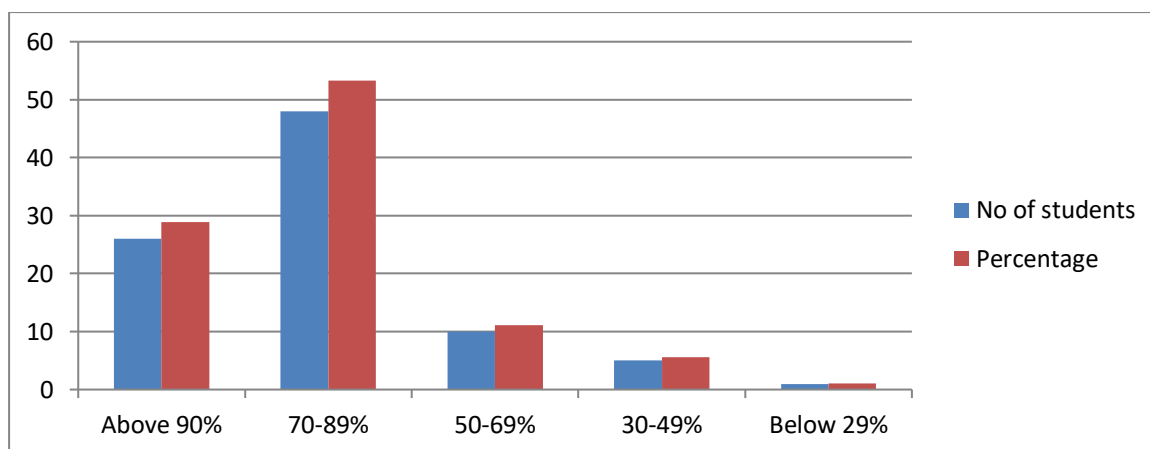
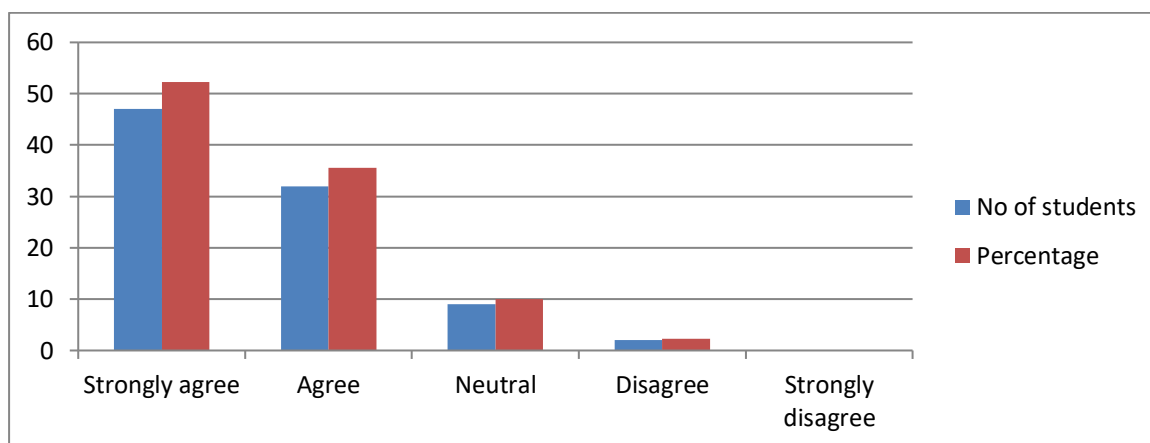


Table No.19 Table showing students opinion on overall quality of teaching and learning process is very good in the institution

Opinion	No of students	Percentage
Strongly agree	47	52.22
Agree	32	35.56
Neutral	9	10.00
Disagree	2	2.22
Strongly disagree	0	0.00
Total	90	100



Analysis:-

Majority of the students are of the opinion that the teachers complete 85-100% of the prescribed syllabus. Teachers come with thorough preparation to the class and their communication is always effective. Teachers approach in teaching is excellent and they are always fair in internal evaluation process. Every time they discuss the performance of the student assignments and are good in mentoring and teaching. Students have strongly agreed that the institution has provided them all opportunities for their overall growth. Teachers at the beginning of the academic year and in between discuss the course and programme outcome and follow up the performance of the students. They always illustrate the concept with suitable examples. They will identify the students' strengths and weakness and help them to overcome their weakness with suitable examples and suggestions. They strongly agree that the monitoring quality in teaching is very good as they use student centric methods like participative learning and problem solving and they encourage the students to take part in extracurricular activities. About 70-89% of the teachers use ICT for teaching and also inculcates soft skills and employability skills among them. The students strongly agree that overall quality of teaching and learning process is very good in the institution.


PRINCIPAL
A.R.G. College of Arts & Commerce
DAVANGERE - 577 004.